

TDI

TECHNICAL DATA

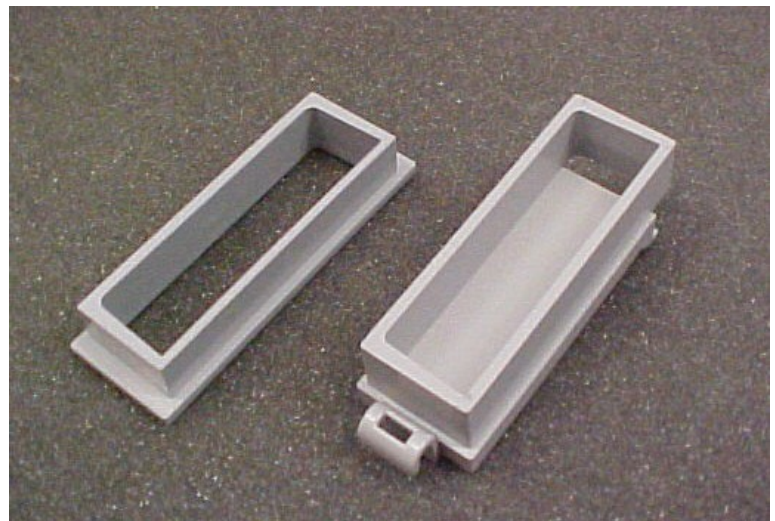
PL-63200 and PL63202 Comtest Splitter Adapters

Description

These simple adapter plates allow the COMTEST NID-01 type splitter to easily adapt to the Corning® 2000 PTD® and 7600 series Network Interface Enclosures. Simply press fit the Comtest Splitter and install.

Installation

- Clip off NID-01 mounting tab
- Press NID-01 in place
- Install assembly in your NID



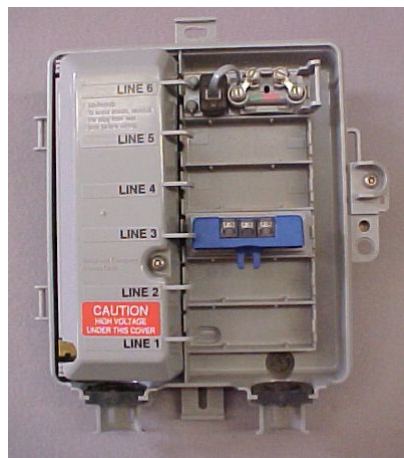
PL-63200

PL-63202

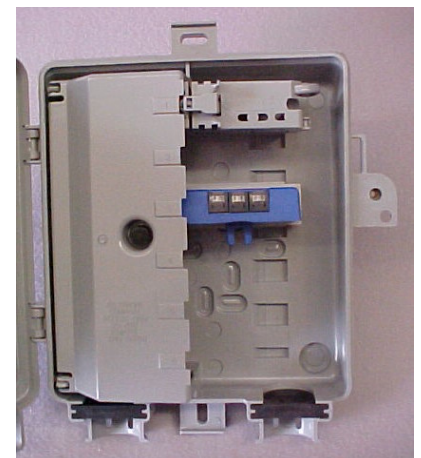
Model Designation

PL-63200: Corning® 7600 type

PL-63202: Corning® 2000 PTD®



Corning® 7600 type



Corning® 2000 type

TDI
11100 Airport Drive, Suite 8
Hayden, ID 83835
208-660-5135 208-772-6196 fax

Specifications subject to change without notice
twilkin@verizon.net
www.ospproducts.com